

SAMPLE PLANS BY TAKÁCS CYCLES
DESIGNED BY FRANK TAKÁCS 2007

Please read these instructions carefully at least once before starting. The drawings are made simple and easy to understand with visual 3D models so you can understand it with out CAD experience. I've been trained in numerous CAD programs, but before that, I did have problems understanding Blue Prints. So I designed this manual the way I would have wanted to see blue prints or drawings back then. A good knowledge of fabrication is needed to build this sample.

Bill of Material

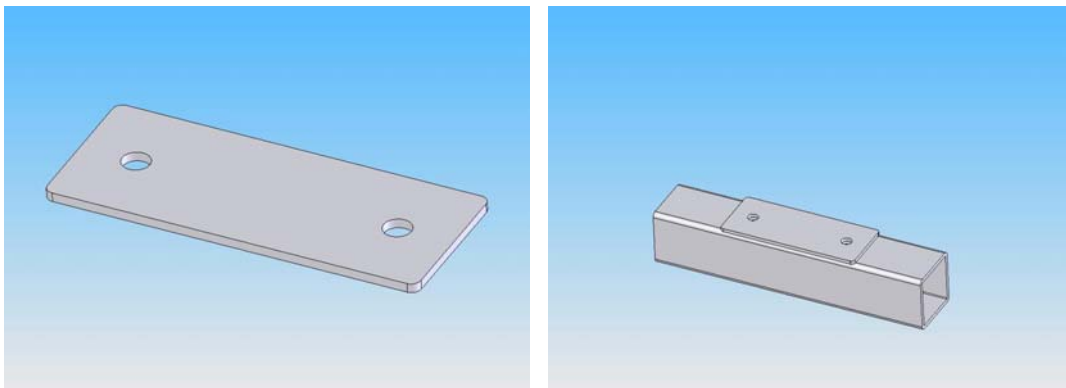
For the Sample Part

Item	Description	Size/Grade	Qty	Style
1	Detail A - see drawing 3	2"x2"x10" - 1/8"wall square tubing	1	N/A
2	Detail B - see drawing 3	2"x1/8"x5" cold rolled stock	1	N/A
3	Detail C – see drawing 3	1.5"x1.5"x6" - 1/8"wall square tubing	1	N/A
4	Detail D – see drawing 3	5/8" round cold rolled stock	1	N/A
5	Detail E - spacer – see drawing 3	3/4"ODx3/8"ID x 1.75" round stock	2	N/A
6	F – Hex Bolt	3/8"-16 X 2.75" grade 5 bolt	2	N/A
7	G – Hex Nut	3/8" – 16 hex nut	2	N/A
8	H – Flat washer	3/8" flat washer	2	N/A
9	I – Lock washer	3/8" lock washer	2	N/A

Start by cutting all materials to length for the BOM.

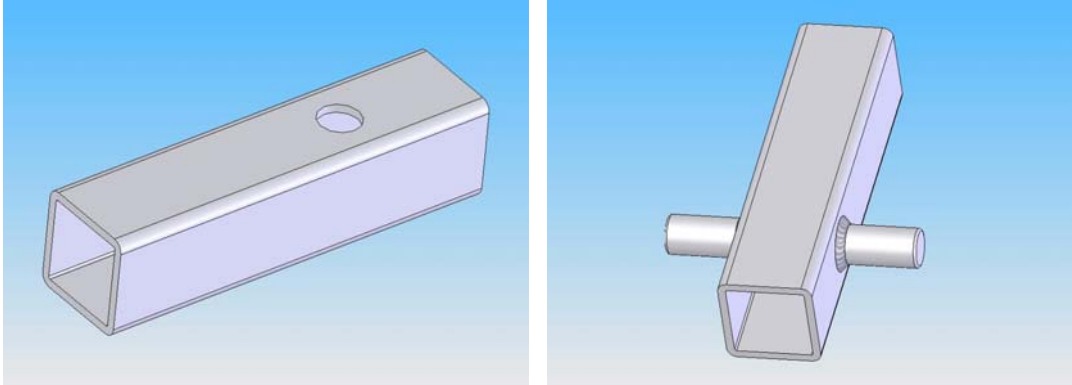
Drill the 3/8" holes on detail B, the holes can be laid out using the dimensions from sheet 3 or transferring the holes from the Template included. If you are using the template make sure that the printer is set to 100% scale. You can double check the scale once is printed with the scale provided bellow the template.

Next, drill the two 3/8" holes on Detail A by laying the dimension from sheet 3 or transfer the holes from Detail C to Detail A by clamping the part together and using the existing hole for guide.

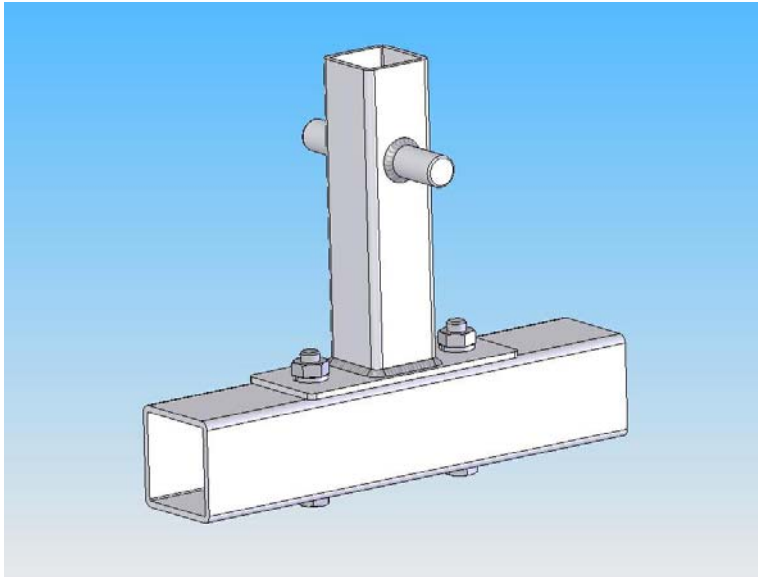
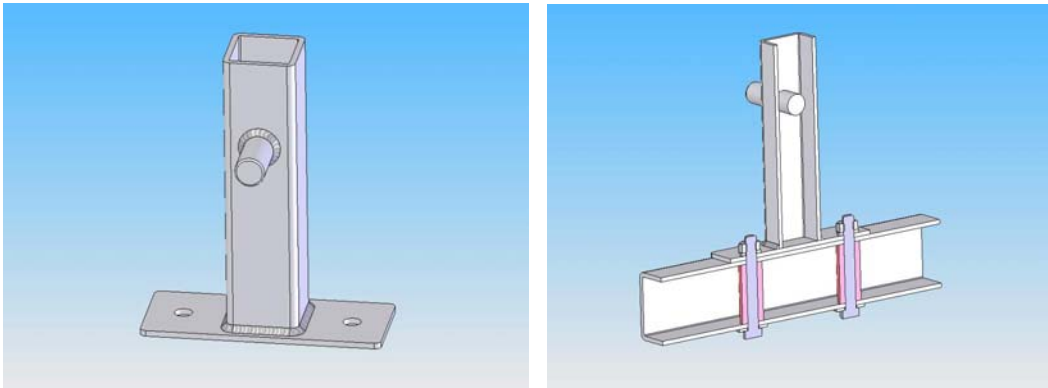


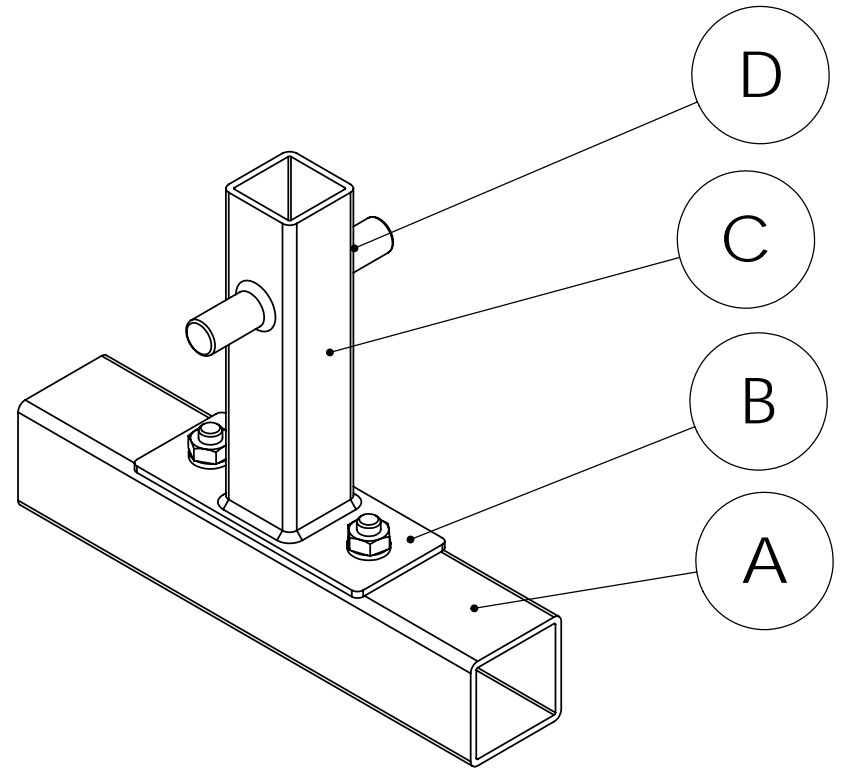
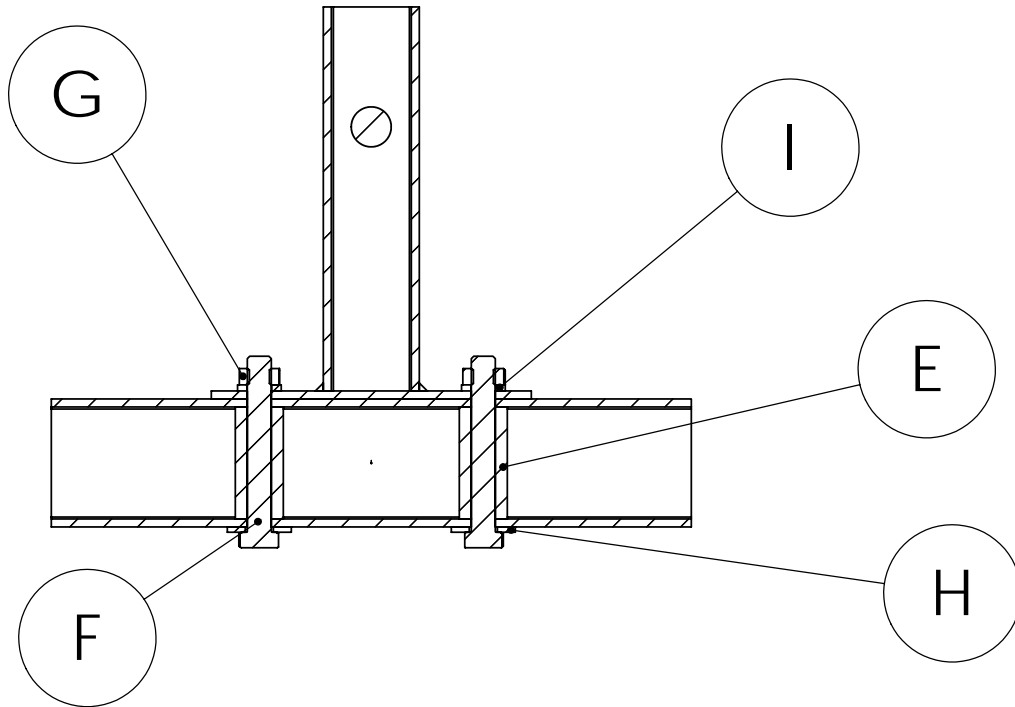
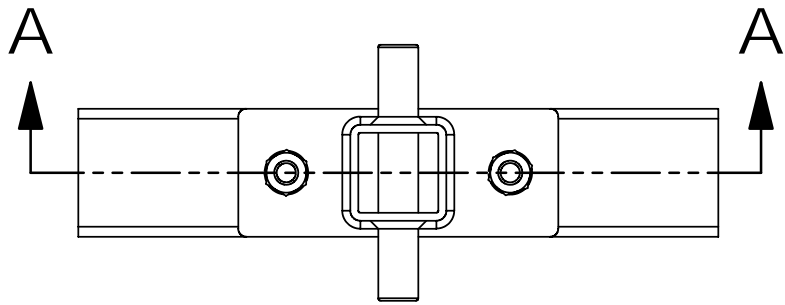
Drill the 5/8" hole in detail C and tack detail D in position. Make sure to center detail D.

SAMPLE PLANS BY TAKÁCS CYCLES
DESIGNED BY FRANK TAKÁCS 2007



Tack Detail C to Detail B and make sure that is centered before welding. Use Detail E spacers before bolting the assembly together. Torque to 35 foot/





Comments:
This drawing is just a sample of how
our manuals are laid out.

PART: Sample

SHEET 1 of 3

UNITS: INCH

SCALE:

REVISION:1

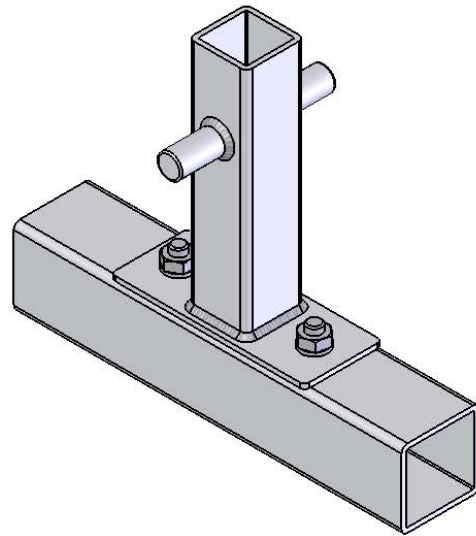
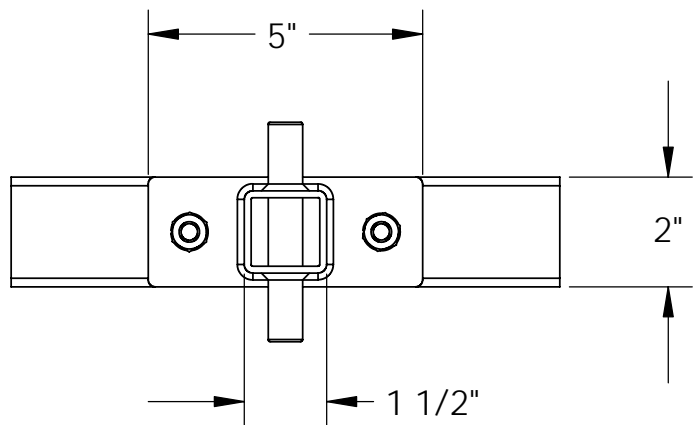
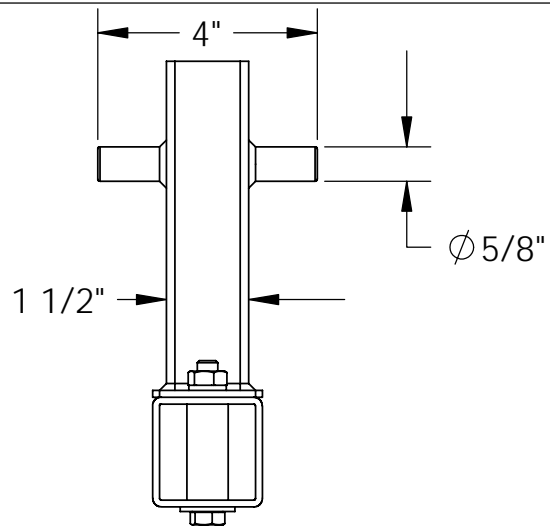
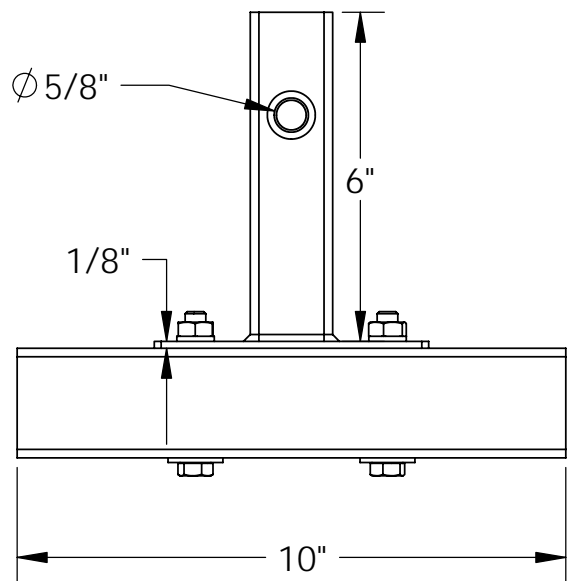
DRAWN BY FRANK TAKACS

Takacs Cycles

P.O. Box 1592
Pomona, CA 91769
www.gotTrikes.com

Sample for Takacs Cycles

© Copyright 2007, Takacs Cycles



Comments: This drawing is just a sample of how Our manuals are laid out.

PART: Sample

SHEET 2 of 3

UNITS: INCH

SCALE:

REVISION:1

DRAWN BY FRANK TAKACS

Takacs Cycles

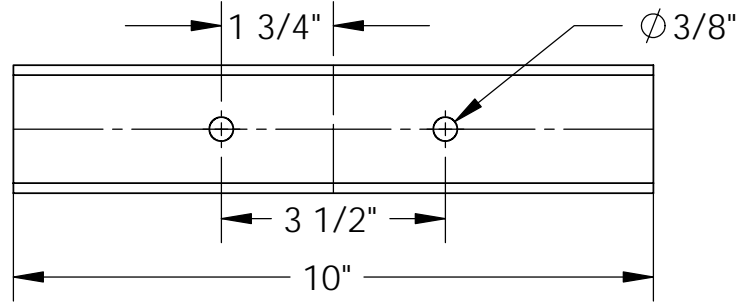
P.O. Box 1592
 Pomona, CA 91769
www.gotTrikes.com

Sample for Takacs Cycles

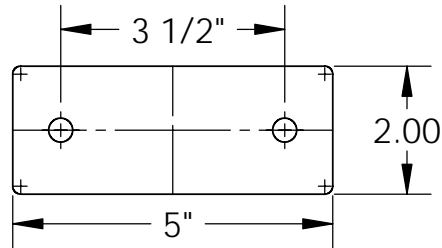
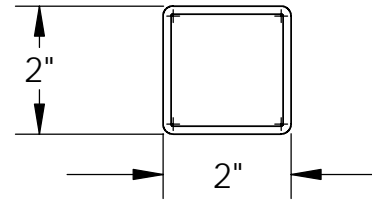
© Copyright 2007, Takacs Cycles

PROPRIETARY AND CONFIDENTIAL

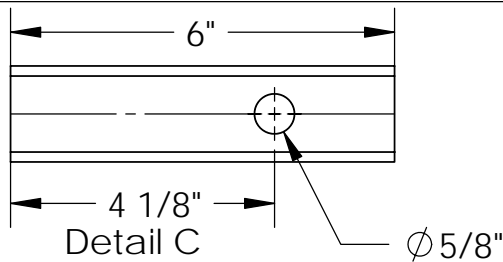
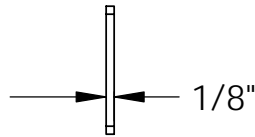
THE INFORMATION CONTAINED IN THIS DRAWING IS THE SOLE PROPERTY OF TAKACS CYCLES. ANY REPRODUCTION IN PART OR AS A WHOLE WITHOUT THE WRITTEN PERMISSION OF TAKACS CYCLES IS PROHIBITED.



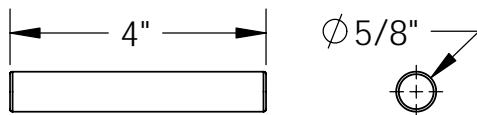
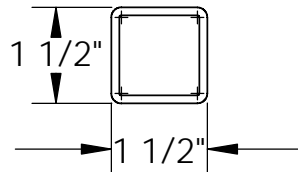
Detail A



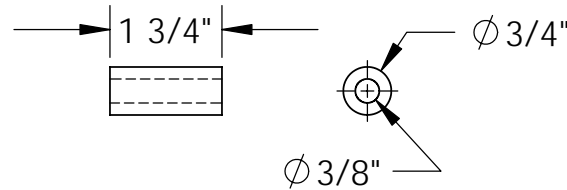
Detail B



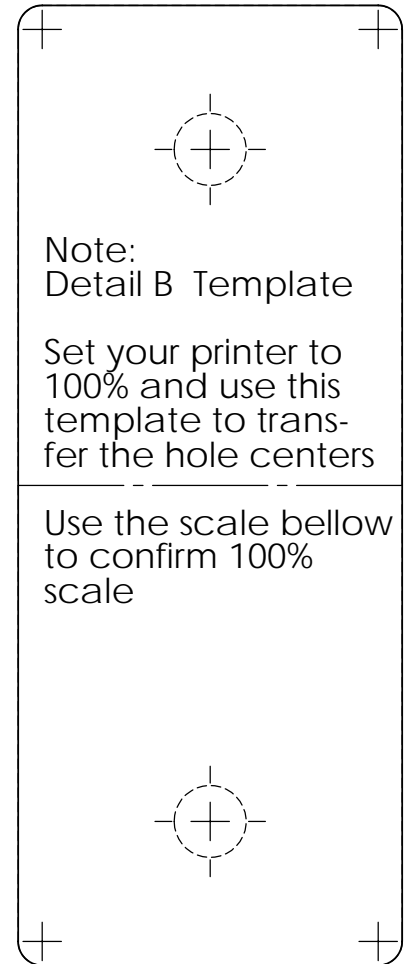
Detail C



Detail D



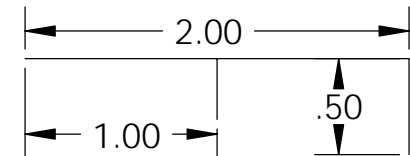
Detail E



Note:
Detail B Template

Set your printer to 100% and use this template to transfer the hole centers

Use the scale below to confirm 100% scale



Comments: This drawing is just a sample of how Our manuals are laid out.
Detail B round corners to R .125"
Detail D 0.040" chamfer

PART: Sample

SHEET 3 of 3

UNITS: INCH

SCALE:

REVISION:1

DRAWN BY FRANK TAKACS

Takacs Cycles

P.O. Box 1592
Pomona, CA 91769
www.gotTrikes.com

Sample for Takacs Cycles

© Copyright 2007, Takacs Cycles

PROPRIETARY AND CONFIDENTIAL

THE INFORMATION CONTAINED IN THIS DRAWING IS THE SOLE PROPERTY OF TAKACS CYCLES. ANY REPRODUCTION IN PART OR AS A WHOLE WITHOUT THE WRITTEN PERMISSION OF TAKACS CYCLES IS PROHIBITED.